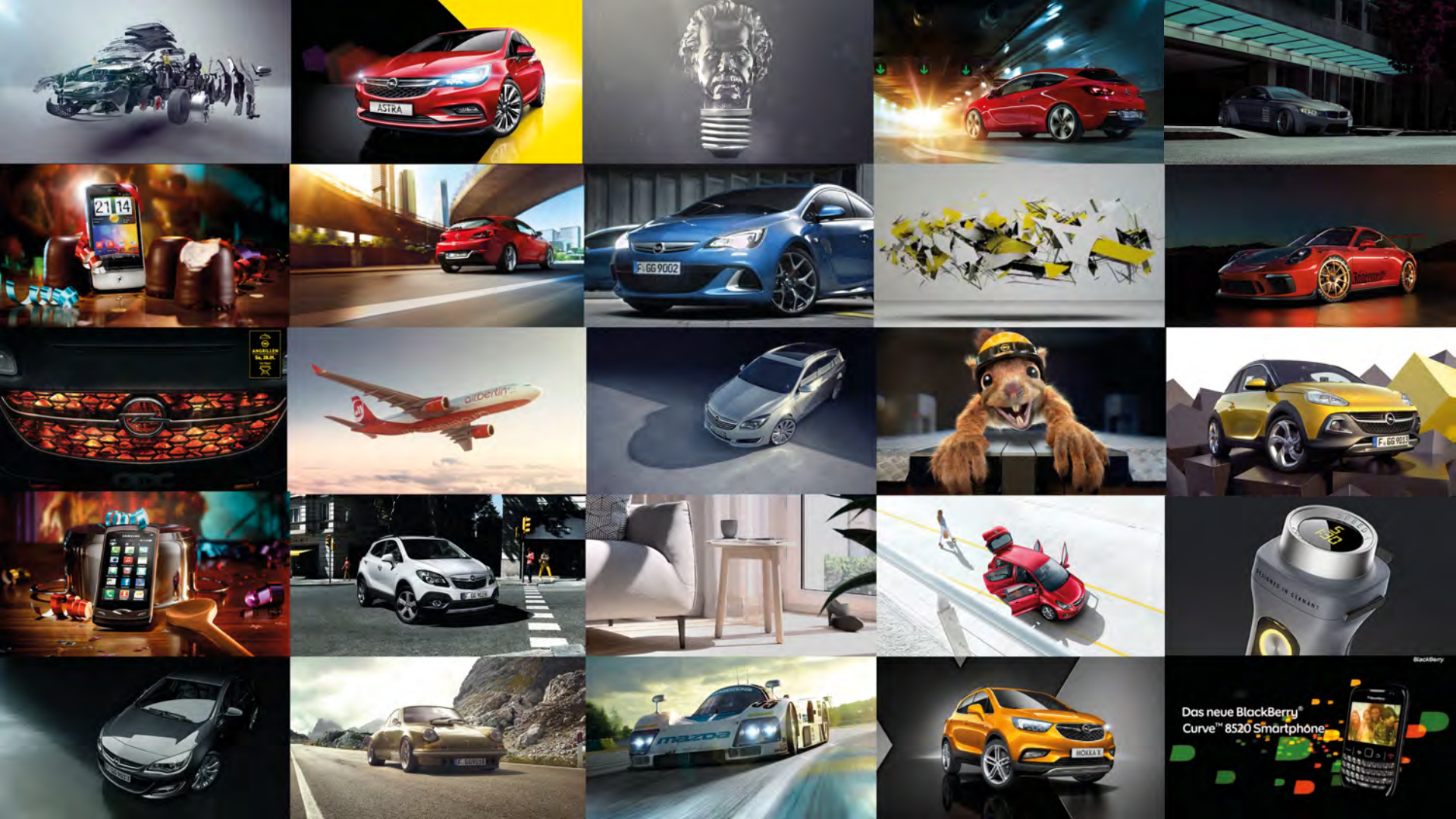




# 747 SAME SAME BUT DIFFERENT

How 3D is going to feel less technical



Das neue BlackBerry Curve™ 8520 Smartphone

BlackBerry



# 747 A SHORT INTRODUCTION

#this is who we are



# FACES OF 747 STUDIOS

67 employees work together in the 747 Studios in a professional and appreciative atmosphere.

Our diverse team combines production, photography, film, styling, food styling, CGI, digital lab, programming, art direction, and post-production, all under one roof.

STYLING

FILM

PRODUCTION  
CONSULTING

CONCEPT

R&D LAB

VIRTUAL  
STUDIOS

PHOTOGRAPHY

3D  
ANIMATION

FOOD  
STYLING



CGI

POST  
PRODUCTION

INTERACTIVE  
EXPERIENCES

SET  
CONSTRUCTION

SOCIAL  
MEDIA

747  
LOCATION  
STUDIOS

747  
PROPS

PIPELINE  
DEVELOPMENT


747  
LOGISTICS

747  
EQUIPMENT



# 747 LOCATION STUDIOS

#daylight for authenticity



**747**  
**BEST OF**  
**PHOTOGRAPHY**

#growing from our roots































**Pflück**  
ÖKOLOGISCH  
SOLIDARISCH  
OPTIMISTISCH

**Pflück**  
**RHABARBER  
SCHORLE**  
Rhabarber aus Mecklenburg-Vorpommern  
und Saft Zucker mit Äpfeln von der Ucker

**Pflück**

**Pflück**  
**JOHANNISBEER  
SCHORLE**  
Johannisbeeren aus Mecklenburg-Vorpommern  
und Saft Zucker mit Äpfeln von der Ucker

**Pflück**  
**RHABARBER  
SCHORLE**

**Pflück**  
**JOHANNISBEER  
SCHORLE**

**Pflück**  
**JOHANNISBEER  
SCHORLE**



**747**  
**SOCIAL MEDIA**  
**CONCEPTS & CONTENT**

#content, content, content



*BraTee*





NEU  
Tealya  
TASTE MY  
NORWAY  
JOHANNISBEERE, HÄGEBUTTE &  
KIEFERNSPROSSEN  
BIO  
BIO FRÜCHTETEE  
MIT NATÜRLICHEN AROMEN



# 747 COMPUTER GENERATED IMAGES

#where nothing is impossible























**IN 3-5 YEARS, MORE THAN  
50% OF VISUAL CONTENT WILL BE  
PRODUCED IN VIRTUAL WORLDS!**





# 747 VIRTUAL STUDIOS

#we enable everyone









**UNREAL**

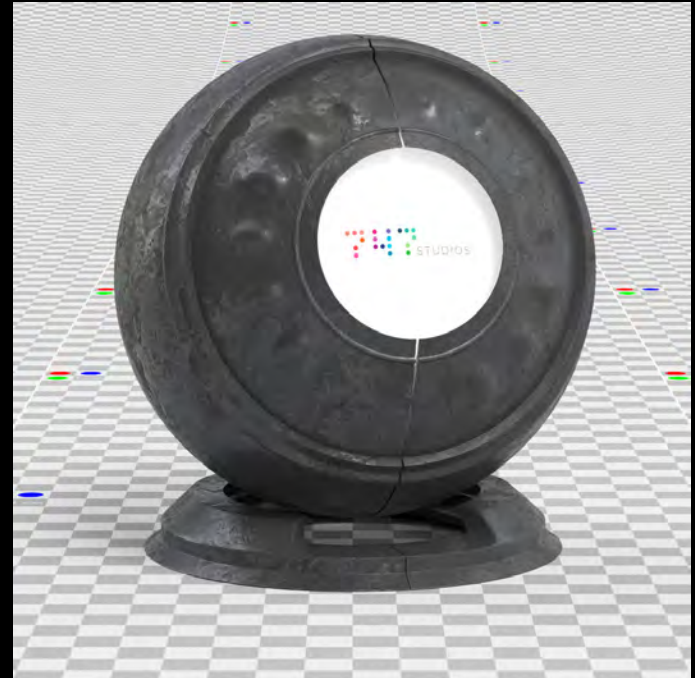
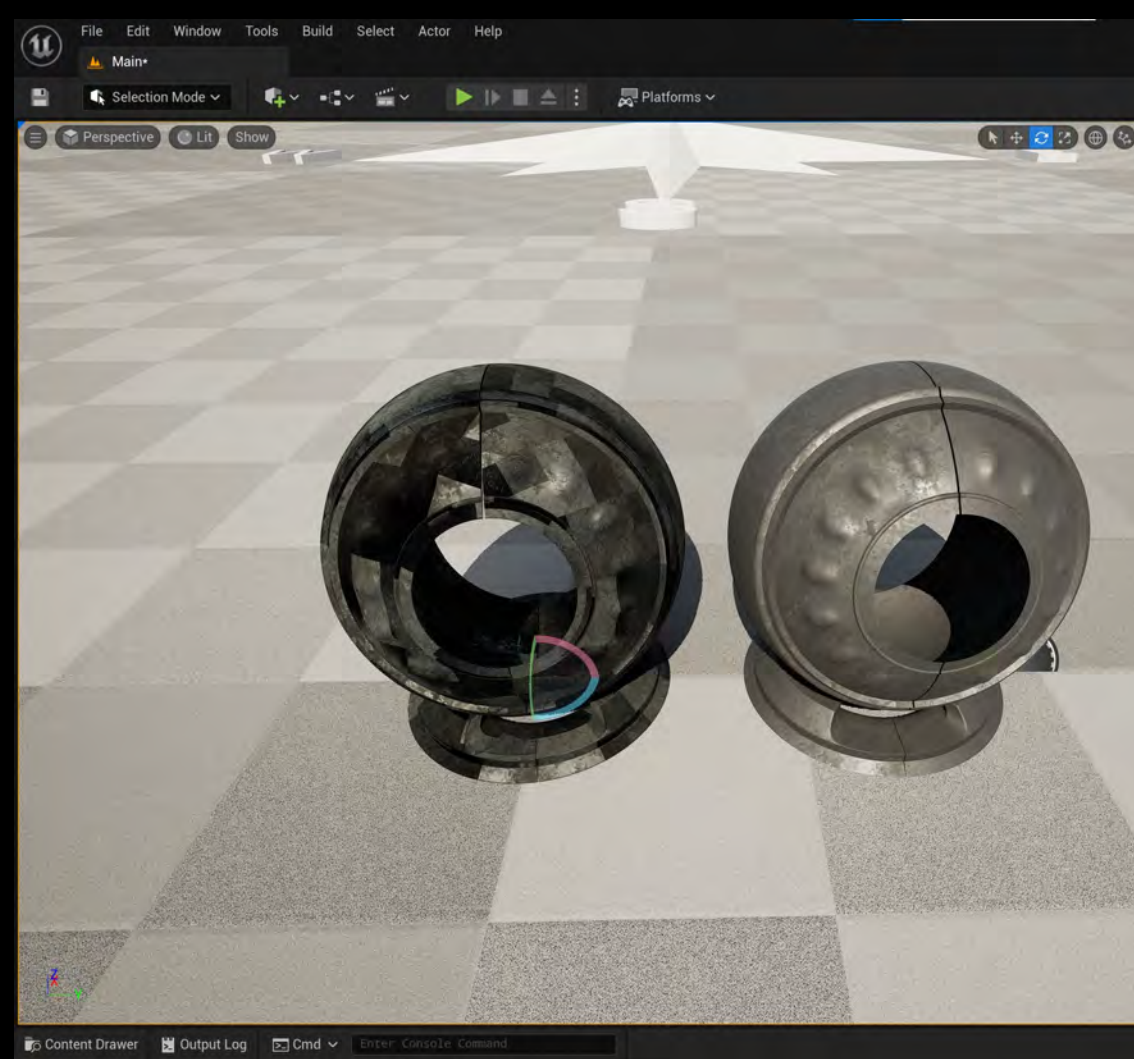


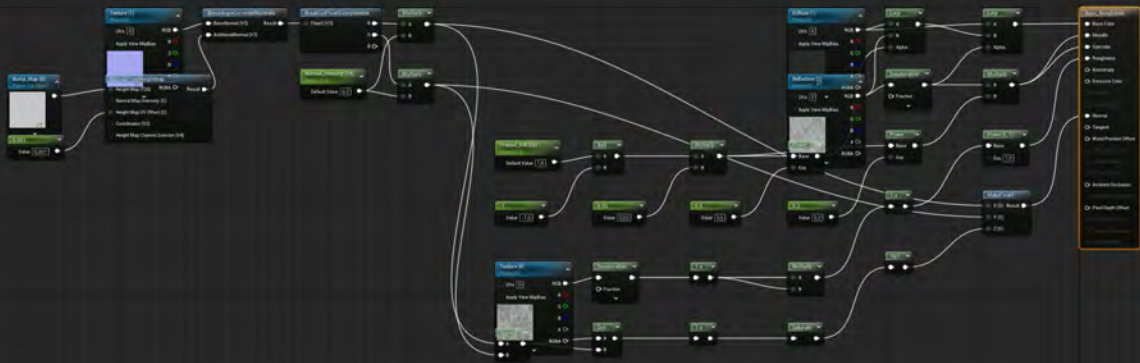
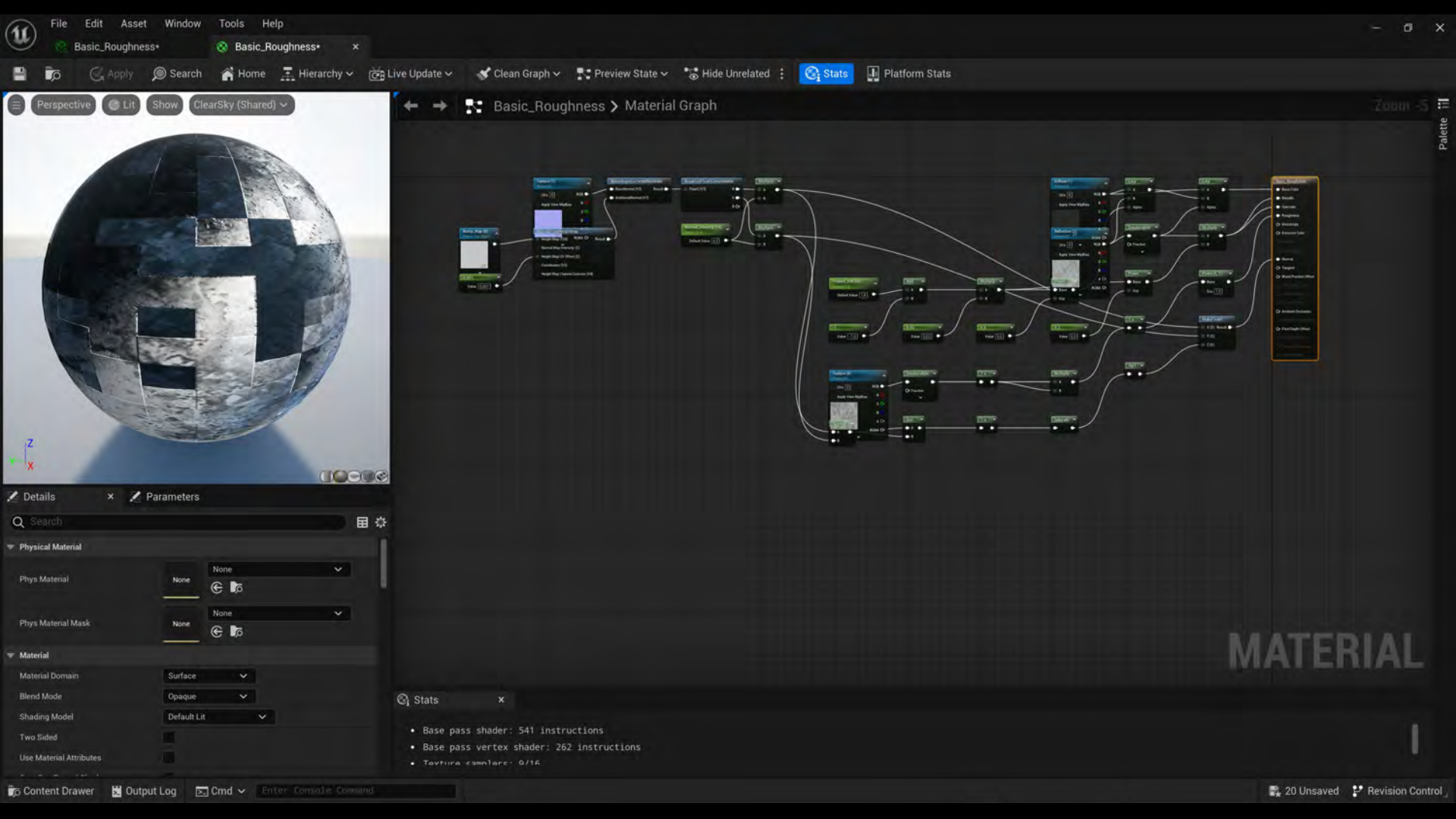
**VRAY**











MATERIAL

Stats x

- Base pass shader: 541 instructions
- Base pass vertex shader: 262 instructions
- Texture samplers: 0/16

Details x Parameters

Search

Physical Material

Phys Material: None

Phys Material Mask: None

Material

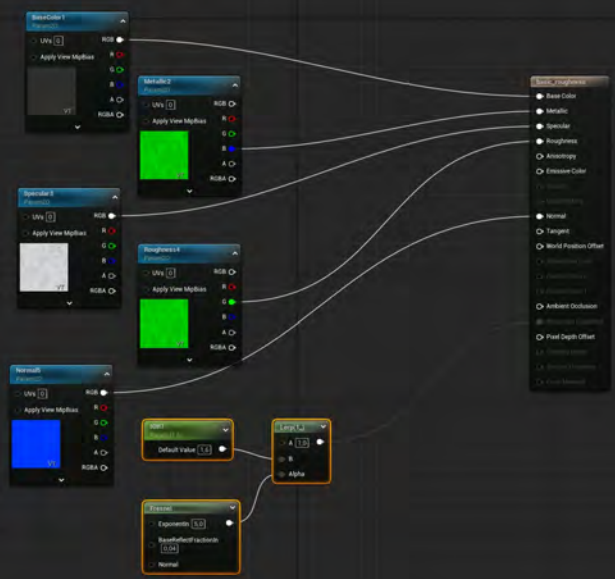
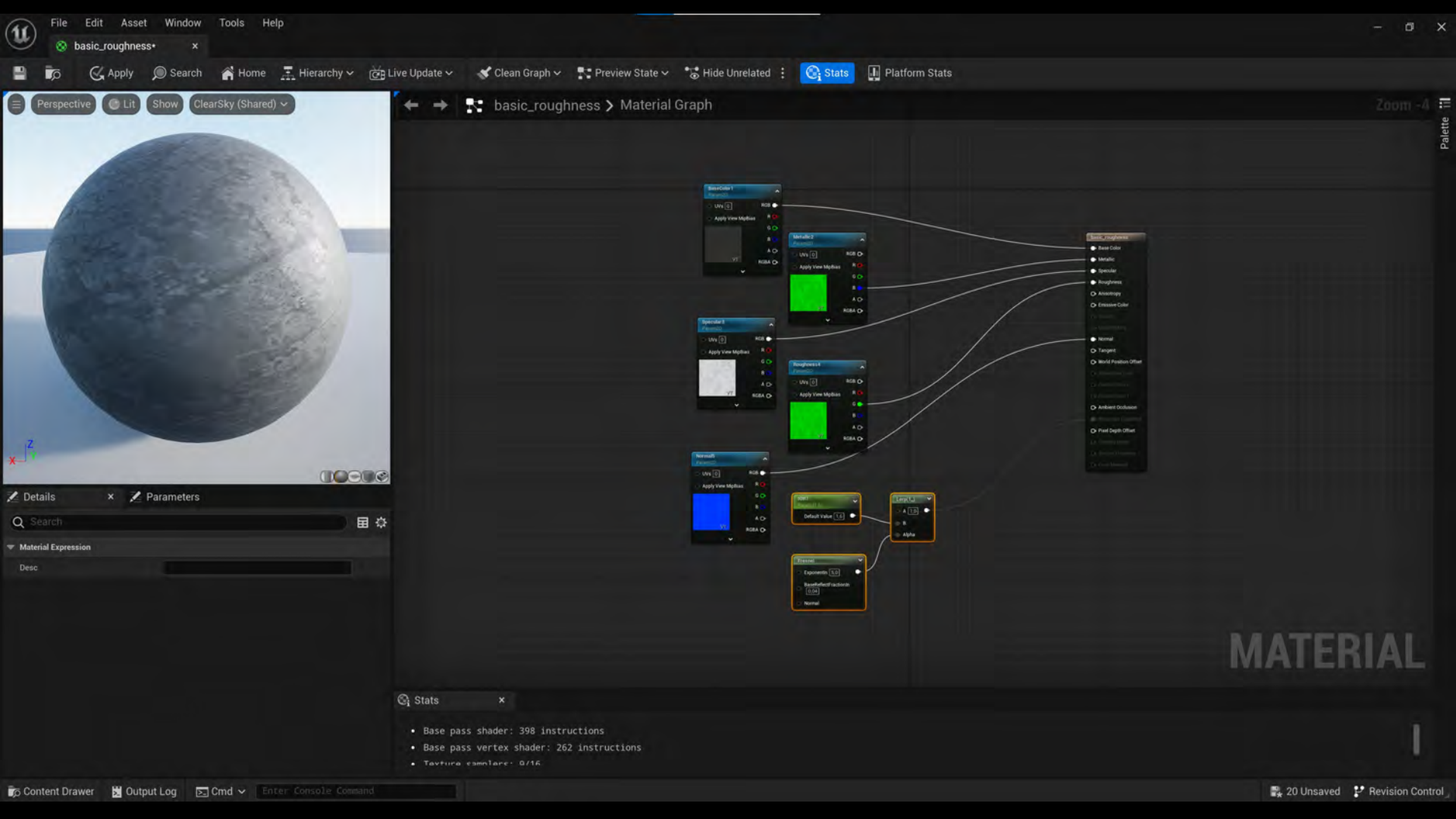
Material Domain: Surface

Blend Mode: Opaque

Shading Model: Default Lit

Two Sided:

Use Material Attributes:



MATERIAL

Stats

- Base pass shader: 398 instructions
- Base pass vertex shader: 262 instructions
- Texture samples: 0/16



THANK